

**EPSON**<sup>®</sup>  
EXCEED YOUR VISION



**Disc**producer™

Epson **PP-100**

Burn and print CD/DVD media –  
fully automatically



You know the situation. You simply want to burn and print a few CDs/DVDs – and suddenly half the day's gone. It shouldn't be this way. And it doesn't have to be – the fully automatic Epson Discproducer™ PP-100 can do it for you at the touch of a button. Whether you want just one disc, or one hundred, you'll find it delivers reliable data burning and photo-realistic printing – quickly, efficiently and extremely cost-effectively.

For many companies, the need to burn and print CDs and DVDs, either individually or in batches, is becoming increasingly important. Whether you're an agency, a public organisation or an independent duplication service, you'll find the Epson Discproducer™ PP-100 will save time, add flexibility, enhance security and reduce process costs.

## Ideal for a wide range of applications

### Duplication service

The Epson Discproducer™ is the perfect tool for maximising margins in the rapidly growing media production market. Whether you want to use it for an individual disc or a batch job, its high reliability, superb print quality and cost-effectiveness make it the ideal system for service providers.

### Clinics and practices

The switch from analogue X-ray or CT film to digital imaging offers new possibilities for cutting process costs and improving patient service. In areas such as radiology, cardiology, ultrasound and CT imaging, the medical community can supply a better service to its patients through the use of digital data.

### Corporations

Increasingly, sectors such as marketing, sales, product development and customer service need to burn multimedia documents onto CD/DVD. But manual burning and labelling of CD/DVDs – especially short runs – carries a significant labour overhead. Automating the procedure using the Epson Discproducer™ saves considerable time and money, while ensuring that confidential data stays in-house.

### Advertising and photo agencies

The CD/DVD medium plays a dual role within advertising and photo agencies. Not only is it an efficient means of delivering digital content to customers, but creative labelling can be a powerful promotional tool, too. The Epson Discproducer™ uses 6-colour Micro Piezo™ inkjet printing to give agencies a valuable opportunity to showcase their design skills through high-impact labelling.

### The Public Sector

By automating the burning/printing process, the Epson Discproducer™ offers organisations within the public sector a valuable way of reducing costs, streamlining processes and enhancing the quality and efficiency of public services.





### High-end print technology and robotics

The quality of any system is a function of the technology inside it. As the only manufacturer in the world that designs, develops and markets both inkjet printers and industrial precision robots, Epson offers the perfect blend of expertise and experience to set new standards in price-performance with products such as the Epson Discproducer™.

As well as the stand-alone version of the product, Epson is developing a network-compatible version of the Discproducer™, featuring additional security functions. It will be available in 2008.

### Schools and universities

As the importance of multimedia educational content increases, in both schools and universities, the need for fast and cost-effective CD/DVD duplication also increases. With the ability to duplicate up to 30 CDs per hour and more than 10,000 per year, the Epson Discproducer™ is ideally suited to the demands of the educational sector.

### Software and IT companies

Any software or IT company that regularly produces customer-specific CD/DVD batches will want to know about the Epson Discproducer™. Whether it's software updates, service packs, multimedia product presentations or data archiving, the Epson Discproducer™ will make an important contribution to the reduction of labour and process costs.

### Pre-press services

Companies working in the field of digital pre-press will find the Epson Discproducer™ invaluable for quickly and conveniently burning work onto visual storage media. With the amazing photo-quality performance of the 6-colour Micro Piezo™ inkjet printer, they can also demonstrate their own creative and quality standards.

### Many data types

Working with the Epson Discproducer™ is as easy as working with an ordinary office printer. Whatever volume of data you need to burn – and whatever type, from music and photos to videos and multimedia presentations – you'll find perfect results at your fingertips.



# Epson Discproducer™ PP-100

## At a glance:



Reliability

With a solid and dust-proof body, the Epson Discproducer™ offers a long lifespan, superb reliability, intuitive operation and high economy, with an incredible print capacity of over 1,000 prints per set of ink cartridges.



Print quality

The best print technology in its class! Using 6-colour Micro Piezo™ Technology, coupled with WaterShield™ media from world-leader, Taiyo Yuden Co., Ltd. the Epson Discproducer™ delivers vibrant, life-like and razor-sharp prints that are both smudge-proof and water-resistant. Media from other manufacturers are also supported.



Cost-effectiveness

Because the Epson Discproducer™ uses a separate cartridge for each colour, you only need to change the cartridges that are near empty. The product also features patented AcuGrip™ robotics to ensure precision handling of CDs/DVDs and eliminate the possibility of damage. The result is an surprisingly low total cost of ownership.



Convenience

The Epson Discproducer™ is as easy to use as an ordinary office printer. It is the only system in its class that offers the ergonomic advantages of total front-operation and status reporting.



Capacity

The Epson Discproducer™ has the ability to duplicate up to 100 CDs/DVDs in a single cycle, and a production capability – depending on data type and volume – of up to 30 units per hour. As a small-run system, the Epson Discproducer™ will reliably deliver high-quality results, year after year.



Reputation for excellence

The Epson brand is associated across the world with quality and innovation, and the company's reputation for quality and support is second to none.

1

Ink level status LED

2

Six separate ink cartridges

3

Three media trays for runs of up to 100

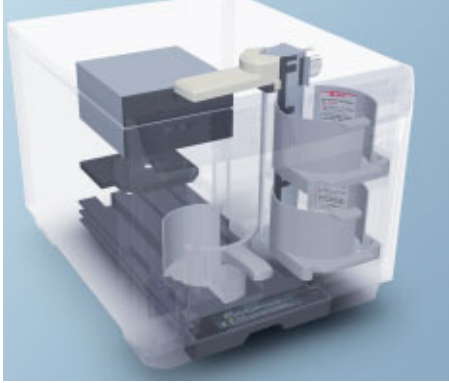
4

Robotic arm



The Epson Discproducer™ is the only product of its type that shows ink status for each individual colour using LED.

When you realise that Epson also designs and manufactures precision robots – products used in a wide range of demanding applications it's no surprise that the company's reputation for reliability is unsurpassed in the industry.



Three trays of 50 discs each allow fully automatic production runs up to 100.



An additional drawer allows the removal of individual discs. This makes problems due to unreadable discs easy to resolve.



PP-100 systems can be stacked to save valuable space.

### **The Epson quality hallmark**

When you build industrial robots, you learn about quality, reliability and precision engineering. And Epson is a world-leader in the design, development and manufacture of such robots as for medical technology and airbag testing. That's why our other products are so reliable – because they are built on the platform of knowledge and experience gained from the robotics environment. The Epson Discproducer™ is a perfect example. Its compact design, coupled with its dust-proof body and a minimum of moving parts, delivers precision performance, superb reliability and amazingly low running costs.

### **Individual or batch production**

If you need to burn and print an individual disc, no problem – you can have it at the touch of a button. And if you want to print batches? Again, it's simple – the Epson Discproducer™ has three trays for 50 discs, allowing up to 100 discs to be produced in one work cycle. It also has an additional drawer for up to 5 discs, so individual CD/DVD blanks can be conveniently removed without having to open the housing.

### **Compact all-in-one design**

With a housing that's less than 40 cm wide, the Epson Discproducer™ is one of the smallest systems in its class. In fact, it's the only system in its segment that offers the ergonomic advantages of being operated totally from the front. Its flat housing means you can stack two systems to save space, and – if required – the top can also be used as a handy storage surface, ideal for media and print cartridges.

### **Patented AcuGrip™ robotic arm**



Specially designed for the Epson Discproducer™, the AcuGrip™ mechanism ensures that the robotic arm reliably grabs only one CD/DVD blank – even if they're stuck together. This increases the life of the product and helps protect against the interruption of unsupervised production runs due to mechanical blockage.

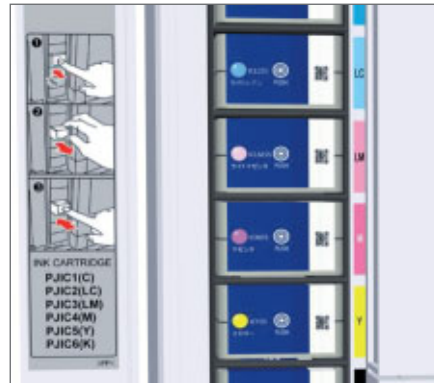


# AcuGrip™

If you're looking for top class, reliable, high-performance inkjet printing for your CDs/DVDs, plus an amazingly low cost of ownership – you've just found it!

**Protecting against printing without ink**

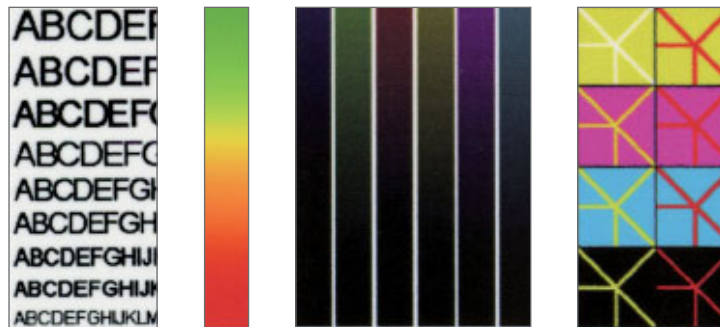
Unlike other systems in its class, the Epson Discproducer™ shows ink level status, using an LED for each individual colour. This can be important, as it allows the printing process to be manually or automatically interrupted in the case of a near-empty cartridge. A situation where the system is printing without ink can cause damage and waste.



The ink cartridge for each colour can be easily changed in just a few seconds.

**Micro Piezo™ printing with six colours**

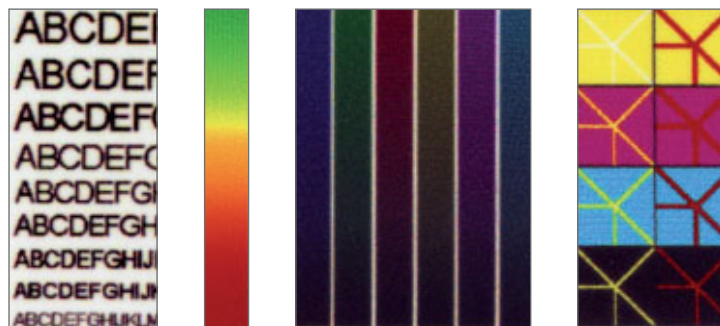
There are many advanced features which make the Epson Discproducer™ unique in its class – and one of these is its patented Micro Piezo™ ink system. Using six – instead of the usual four – colours, it delivers the level of photo-realistic image quality often associated with digital art printing. And that's not all. Epson's Micro Piezo™ technology also protects against striation and ink bleed, and allows ultra-fine colour graduation plus razor-sharp text – even in small font sizes.



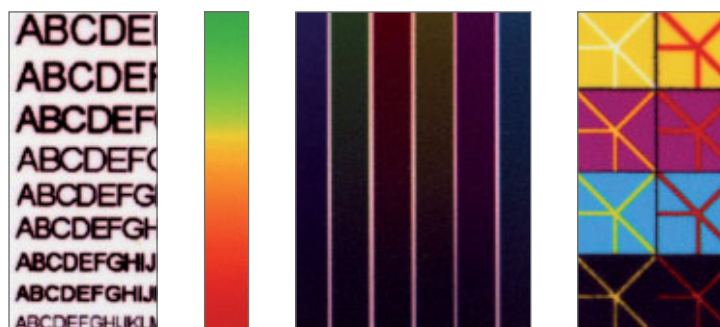
Epson Discproducer™ PP-100: Photo-realistic colour gradients, smudge-proof, water-resistant, no ink bleed, razor-sharp text – even in 4 point!

**Cost-effective and flexible**

With the ability to produce over 1,000 discs, depending on the print image, from each set of cartridges, the Epson Discproducer™ delivers an attractively low cost per page. What's more, you have total flexibility in your choice of consumables, too – you can choose whether you use the specified consumables (Epson ink + WaterShield™ media), or buy your cartridges and media individually.



Competitor A: irregular and impure colour gradients, ink bleed

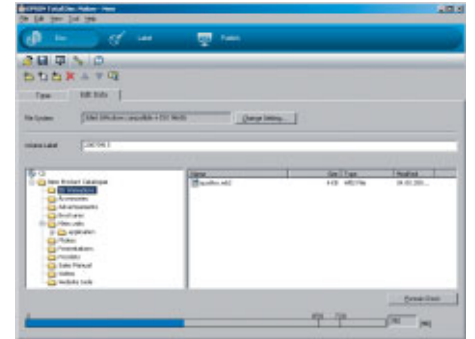


Competitor B: irregular and impure colour gradients, striation, unclear text

Working with the Epson Discproducer™ is as easy as working with an ordinary office printer. Simply compile your data, compose an image, configure the run, click “OK”... and it’s done. You’re free to get on with other things.

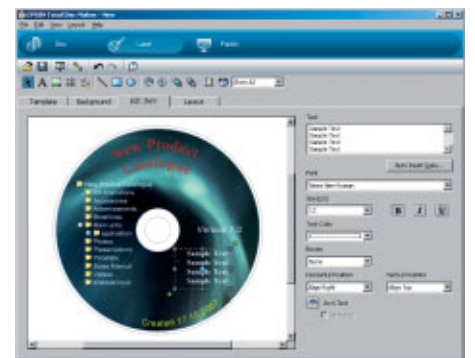
### Step 1: Compile data

The Epson Discproducer’s software (Disc Editing view) works like standard programs for burning data on digital storage media. After indicating whether you’re burning music, videos or data to the disc, you simply load the data and save it to an easily created folder. It’s quick and it’s simple, so you don’t need to be an expert – it can be done by novices and technophobes.



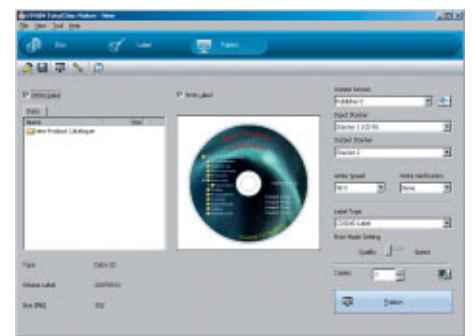
### Step 2: Composing the print image

Composing your own CD/DVD image is easy, using the Epson Discproducer’s software (Label Editing view). You can either let your creativity run wild, or use one of the many pre-defined templates and images provided. The integral preview display let’s you check your composition, and – when you’re happy – you can save your work for easy retrieval in the future.



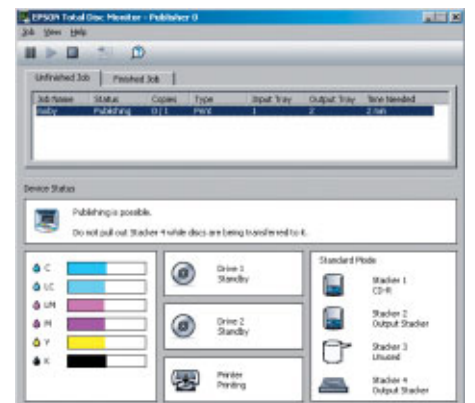
### Step 3: Configuring production

These are the last few simple steps before pressing Go. The Epson Discproducer’s software (Publishing view) leads you through the process, helping you to set parameters such as the number of CDs or DVDs to be burned, the burning and print speed, the in/out trays for discs, and print resolution. Then simply press “Publish” – and your production run is on its way.



### Monitoring system reliability

The Epson Discproducer’s *Monitoring Software* keeps you informed about all important parameters, such as tray status and pending jobs. This helps you choose whether to let your production run continue unattended, and protects you against any unexpected interruptions – especially useful when you’re working against a tight deadline.



<b>Model</b>	<b>Epson Discproducer™ PP-100</b>	
<b>Publishing speed</b> (Burn and Print)	<ul style="list-style-type: none"> <li>■ CD: 30 discs/hour, Epson specified CD-R 600 MB data volume, writing speed: Drive max speed: 40 x</li> <li>■ DVD: 13 discs/hour, Epson specified DVD-R 3.8 GB data volume, writing speed: Drive max speed 12 x</li> </ul>	
<b>Publishing modes</b> (number of copies)	<ul style="list-style-type: none"> <li>■ External output: 1–5, 2 stackers &amp; pick-up tray used</li> <li>■ Standard mode: 1–50, 2 stackers used (autom.)</li> <li>■ Batch mode: 1–100, 3 stackers used</li> </ul>	
<b>Print specifications</b>	<ul style="list-style-type: none"> <li>■ Print speed: 45 discs/hour, bidirectional, (Fast mode) 30 discs/hour, bidirectional, (Fine mode)</li> <li>■ Print head: Black ink 180 nozzles, Colour ink 180 nozzles x 5 colours</li> <li>■ Print direction: Bidirectional or uni-directional</li> <li>■ Print resolution: High-speed 1440 dpi x 720 dpi (Fast mode) High-resolution 1440 dpi x 1440 dpi (Fine mode)</li> </ul>	
<b>Ink cartridge</b>	<ul style="list-style-type: none"> <li>■ Ink type: Dye ink</li> <li>■ Colours: Cyan, Magenta, Yellow, Light cyan, Light magenta, Black</li> <li>■ Capacity: 1000 discs or more (Ø 45–116 mm, 16,7 % colour sharing, continuous printing, mode setting: Fine)</li> </ul>	
<b>Print area</b>	<ul style="list-style-type: none"> <li>■ Standard setting for outside diameter: Ø 116 mm</li> <li>■ Outside diameter setting range: Ø 70 – 119.4 mm</li> <li>■ Standard setting for inside diameter: Ø 45 mm</li> <li>■ Inside diameter setting range: Ø 18 – 50 mm</li> <li>■ Guaranteed print area: Ø 45 – 116 mm</li> </ul>	
<b>CD/DVD drives</b>	<ul style="list-style-type: none"> <li>■ CD/DVD drives: 2 drives</li> <li>■ Writing speed: CD: Maximum 40 x DVD-R, DVD+R: Maximum 12 x DVD-R DL, DVD+R DL: Maximum 8 x</li> </ul>	
<b>Supported Media</b>	<ul style="list-style-type: none"> <li>■ Size: Outside diameter: Ø 120 mm ± 0.3 mm Inside diameter: Ø 15 mm + 0.1/-0 mm Thickness: 1.2 mm + 0.3/-0.1 mm</li> <li>■ Form: Supports common 12 cm (4.7 inch) discs Does not support specially-shaped discs</li> <li>■ Type: CD-R, DVD-R, DVD+R, DVD-R DL, DVD+R DL</li> <li>■ Surface: Printable (high quality or glossy), for glossy discs only Epson recommended is supported</li> </ul>	
<b>External dimensions</b>	Width 377 mm, Depth 465 mm, Height 348 mm (Excluding the AC cable and USB cable)	
<b>Mass</b>	Approximately 24 Kg (52.9 lb), including the stackers and ink cartridge, excluding the AC cable and discs	
<b>Software</b>	<ul style="list-style-type: none"> <li>■ Total Disc Maker: Installed to the user's PC to publish discs</li> <li>■ Total Disc Monitor: Displays the status of JOBS and devices</li> <li>■ Total Disc Setup: Installed to user's PC to make settings of PP-100</li> <li>■ TD Bridge System incorporation tool to use the with other companies' application</li> <li>■ Adjustment Tool for PP-100</li> </ul>	
<b>Required IT-environment</b>	<ul style="list-style-type: none"> <li>■ OS: Windows XP SP2 or later, Home/Professional, Windows 2000 SP4 or later, Professional</li> <li>■ CPU: Pentium 4, 1.4 GHz or higher, Memory: 512 Mbytes or larger</li> <li>■ HDD: 10 Gbytes or larger, 7200 rpm or more</li> <li>■ Graphics environment: XGA or more, 65536 colors or more</li> <li>■ Sound environment: A sound device and a supported driver must be installed for music media</li> <li>■ USB 2.0 (High-speed)</li> <li>■ USB port: This product cannot be used in USB port of the PC equipped with some ATI's chipset as follows: ATI's Southbridge IXP (SB)460 or earlier</li> <li>■ Individual published performance results may vary depending on processing capacity of PC</li> </ul>	
<b>Interface</b>	Universal Serial Bus Specifications Revision 2.0, Transmission speed: 480 Mbps (High-speed Device)	
<b>Electrical</b>	Rated voltage: AC 100 V to AC 240, Frequency: 50 Hz to 60 Hz	
<b>Standards</b>	CE Marking:	EMC Directive 2004/108/EC, EN55022 Class B, EN61000-3-2 EN6000-3-3, EN55024 Low Voltage Directive 2006/95/EC, EN60950-1 (TÜV)
<b>Warranty</b>	12 months (excl. CD/DVD drive), CD/DVD drive: 6 months	



For further information please contact your local Epson office or visit [www.discproducer.epson-europe.com](http://www.discproducer.epson-europe.com)

**Austria** 0810/20 01 13 (0,07 €/Min.) **Belgium** 070/350120 (0.1735 €/Min.) **Czech** 800 / 142 052  
**Denmark** 44 50 85 85 **Finland** 0201 552 091 **France** 0892 899 999 (0,34€/min)  
**Germany** 01805/23 41 10 (0,12 €/Min.) **Greece** 210-6244314 **Hungary** 06800 147 83  
**Italy** 02-660321 10 (0,12 €/Min.) **Luxembourg** 900/43010 (0,24 €/mn.) **Middle East** +9714 8818934  
**Netherlands** 0900-5050808 (0.05 €/oproep + 0.15 €/Min.) **Norway** 22 06 42 80  
**Poland** 0-0-800 4911299 (0,16 zł/min.) **Portugal** 707 222 111 **Republic of Ireland** 1 800 409132  
**Russia** (095) 777-03-55 **Slovakia** 0850 111 429 **South Africa** (+2711) 465-9621 **Spain** 93 582 15 00  
**Sweden** 077-140 01 35 **Switzerland** 0848 448820 (4-8 cent./mn.) **Turkey** (0212) 3360303  
**United Kingdom** 08702 416900

EPSON® is a registered trademark of SEIKO EPSON® Corporation. All other product names and other company names used herein are for identification purposes only and may be trademarks or registered trademarks of their respective owners. Errors and omissions excepted, all specifications are subject to change without notice.  
Entity carrying out management and coordination pursuant to article 2497 bis of Civil Code: Epson Europe BV

